

Heartland

Restaurant

HR Networking Template and Domains to Whitelist

03/2020

Table of Contents

Overview	2
About Heartland Restaurant	2
Domains to Whitelist	3
Additional Domains you may want to whitelist	3
Domains that aren't necessarily required to run our system but can be used for certain functionality.	3
Heartland Restaurant Hardware Configuration	4
Heartland Restaurant Control Scan Network Template	4
Heartland Restaurant Sites	5
ControlScan Login and Support	5
Control Scan Template	5
SSIDs	5
Hardwired Devices	6

Overview

This document was created to show you a list of domains you may need to Whitelist depending on your network firewall configuration. As well as a network layout of a common two terminal site, along with a basic Control Scan(optional) template for reference.

About Heartland Restaurant

Heartland Restaurant is a cloud based Restaurant Point of Sale solution. Heartland Restaurant is comprised of several iOS applications including the main POS application, Kiosk application, Customer Display application, Guest application, and a web based portal for setup and menu configuration. The applications use a multitude of languages including Objective-C, Swift, angular, react, PHP and a few others. Heartland Restaurant uses Amazon's AWS services to send, receive, and store data which includes backup and failover services.

Domains to Whitelist

- *.hrpos.heartland.us - This wildcard should cover all the below HRPOS Domains
- admin.hrpos.heartland.us (ports 443, 3000, 5400)
- secure.hrpos.heartland.us (ports 443, 3000, 5400)
- api.hrpos.heartland.us (ports 443)
- apps.hrpos.heartland.us (ports 443)
- online.hrpos.heartland.us (ports 443)

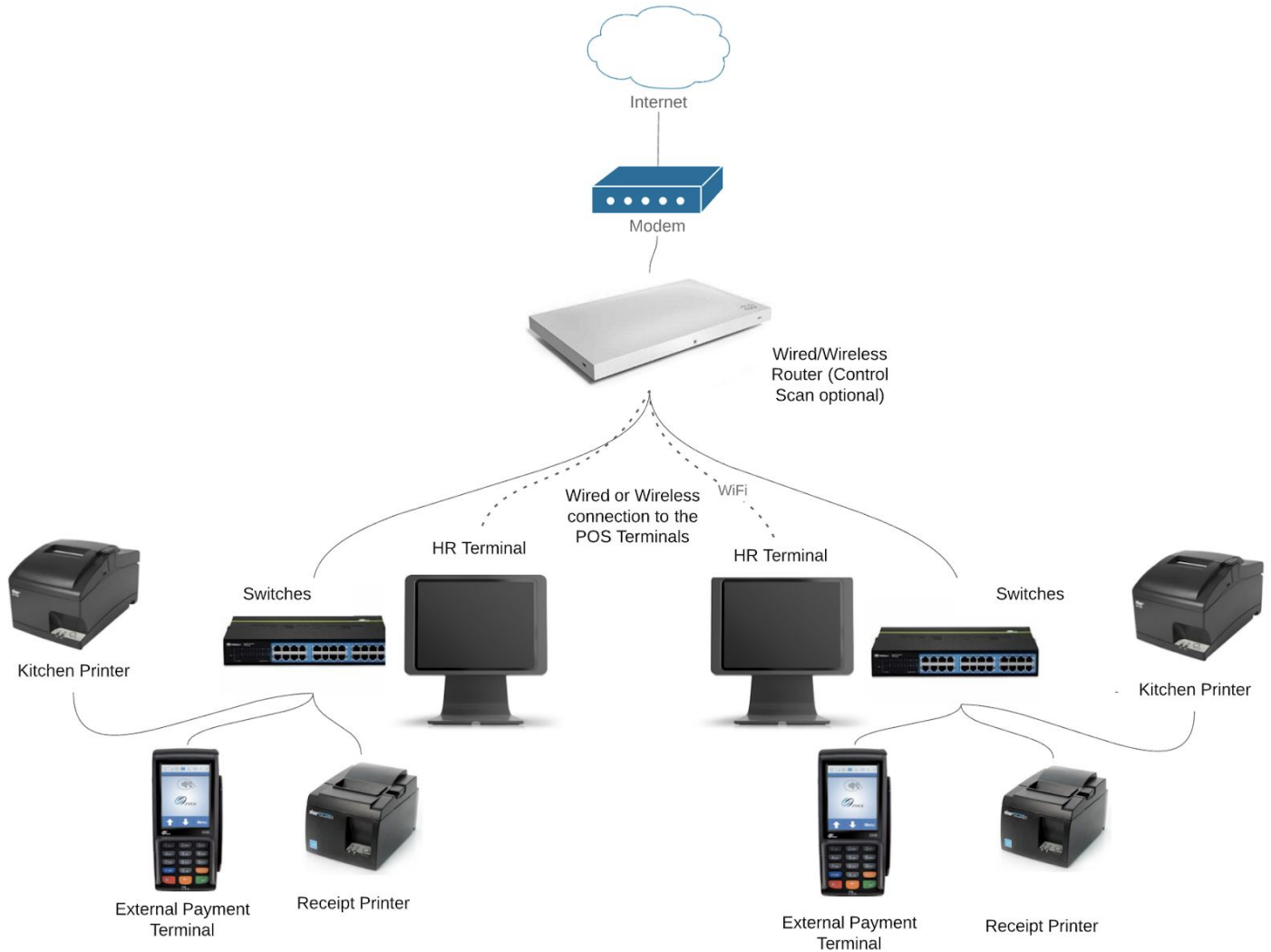
Additional Domains you may want to whitelist

- amazonaws.com - We use several amazon services
- cloudfront.net - This is amazon's CDN service
- itstgate.com - This is the BridgePay gateway. If the site is using BridgePay this will be needed
- monetary.co - This is the Monetary gateway. If the site is using Monetary this will be needed
- t.broadpos.com - With a PAX device this will allow communication to download file configurations.
- gpr.globalpaymentsinc.ca - With PAX PATT, this URL may be used.
- If using EMV we will have to get you a more detailed list as those terminals speak directly to the processor.

Domains that aren't necessarily required to run our system but can be used for certain functionality.

- [Apple.com](https://apple.com) - For obvious reasons. This system runs on iOS, so in order to receive security updates, notifications, etc. this should be open. Below are additional Apple domains:
 - apps.mzstattic.com
 - icloud-content.com
 - is1-ssl.mzstattic.com
 - is2-ssl.mzstattic.com
 - is3-ssl.mzstattic.com
 - is4-ssl.mzstattic.com
- [Teamviewer.com](https://teamviewer.com)
- google.com - Although our application doesn't talk directly with google, we are using some of their maps API in our website. So making setup changes on our admin portal will be loading javascript libraries from google.

Heartland Restaurant Hardware Configuration



Heartland Restaurant Control Scan Network Template

Below is the default network scheme that is used with Control Scan for Heartland Restaurant.

It is important to make sure that the old Xenial SSIDs are 'forgotten' on all devices that may have it locally saved to prevent conflicts. Below details the template used for Heartland Restaurant locations.

ControlScan Login and Support

Any changes with control scan has to go through control scan. Support number **(800) 393-3246 option 1**

Control Scan Login

https://n134.meraki.com/ES110866-Slaps-B/n/sIJ-ibgc/login/dashboard_login

Control Scan Template

This network is bound to the configuration template [Hosp. Tech. Sys. - HRPOS](#)

SSIDs

HRPOS Payments

IP Address - 192.168.110.X

Port 1 Hardwired iPads IP range:

192.168.10. **2- .15**

Port 1 Printers IP range:

192.168.10. **16-.47**

HRPOS BackOffice

IP Address - 192.168.20.X

Port 2 PAX:

192.168.40. **X**

HRPOS Guest

IP Address - 10.0.0.0

Port 1 PAX(Alternate):

192.168.10. **.48-.63**

Port 3 any Back Office devices

192.168.20.X

Restaurant

Hardwired Devices

